

CONSEIL DE L'ATLANTIQUE NORD
NORTH ATLANTIC COUNCIL

Trans

EXEMPLAIRE
COPY

N° 189

ORIGINAL: ENGLISH
26th April, 1967

NATO CONFIDENTIAL
ADDENDUM to
WORKING PAPER
AC/89-WP/213

SUB-COMMITTEE ON SOVIET ECONOMIC POLICY

Addendum to AC/89-WP/213 dated 20th April, 1967

Please add the attached tables as Annex to the above document.

COPIES - TRANSLATIONS
Ce document est en prêt et doit être
renvoyé au Bureau de Documentation
N° 479

OTAN/NATO,
Paris (16e).

NATO CONFIDENTIAL

DECLASSIFIED/DECLASSIFIEE - PUBLIC DISCLOSED/MISE EN LECTURE PUBLIQUE

List of Tables

- Table 1 : Resident Population in the Soviet Zone of Germany
- 2 : Industrial Gross Production
- 3 : Industrial Production of Selected Products
- 4 : Structural Development of Agriculture
- 5 : Structural Development of Agriculture
- 6 : Production of Field Crops
- 7 : Development of Cattle Stocks
- 8 : Production of Slaughter Animals, Milk and Eggs
- 9 : Net Yields of the Most Important Crops
- 10 : Numbers of Tractors and Major Mechanical Equipment in the "Socialist" Farms
- 11 : Production, Foreign Trade and Supplies of Mineral Fertilizers to Agriculture
- 12 : Number of People Gainfully Employed
- 13 : Investments
- 14 : Gross Investments in Fixed Assets
- 15 : Gross fixed investments according to Economic Branches
- 16 : Social income in the Soviet Zone and in the Federal Republic of Germany per head of the population
- 17 : Share of the Various Forms of Ownership in the "Total Social Product" by Economic Sectors
- 18 : Foreign Trade Turnover of the Soviet Zone in 1,000 million convertible marks and per cent
- 19 : Foreign Trade Turnover of the Soviet Zone, 1958 = 100
- 20 : Foreign Trade of the Soviet Zone, Exports and Imports in million convertible marks and 1958 = 100
- 21 : Foreign Trade of the Soviet Zone with Communist Countries, Exports
- 22 : Foreign Trade of the Soviet Zone with Communist Countries, Imports
- 23 : Total Foreign Trade with Communist Countries
- 24 : Foreign Trade of the Soviet Zone with the Soviet Union

- Table 25 : Principal Goods Exported from the Soviet Zone to the Soviet Union in 1967
- 26 : Principal Goods Imported by the Soviet Zone from the Soviet Union in 1967
- 27 : Planned Share of Raw Material in the Total Imports of the Soviet Zone from the Soviet Union in 1967
- 28 : Foreign Trade of the Soviet Zone with COMECON Countries Excluding the Soviet Union
- 29 : Foreign Trade of the Soviet Zone with Communist Countries of Asia
- 30 : Foreign Trade of the Soviet Zone with the Free World
- 31 : Exports from the Soviet Zone to Various Western Countries
- 32 : Imports by the Soviet Zone from Various Western Countries
- 33 : Foreign Trade of the Soviet Zone with NATO-Countries Excluding the Federal Republic of Germany
- 34 : Foreign Trade of the Soviet Zone with the five most important Western Trade Partners
- 35 : Foreign Trade of the Soviet Zone with Developing Countries
- 36 : Foreign Trade of the Soviet Zone with Cuba
- 37 : Composition of Soviet-zonal Exports to the Soviet Union by Categories of Goods and Selected Products
- 38 : Composition of Soviet-zonal Imports from the Soviet Union by Categories of Goods and Selected Products
- 39 : Composition of Soviet-zonal Foreign Trade with Various Countries of the Free World and NATO
- 40 : Composition of Soviet-zonal Foreign Trade with the five most Important Western Trade Partners
- 41 : Composition of Soviet-zonal Foreign Trade with the Developing Countries Egypt and India
- 42 : Composition of Soviet-zonal Foreign Trade with Cuba
- 43 : Soviet-zonal Trade Agreements with NATO Countries
- 44 : Intra-German Trade
- 45 : Out-line of the New Planning System in the Soviet Zone

NATO CONFIDENTIAL
ANNEX to
WORKING PAPER
AC/89-WP/213

Table 1 : Resident Population in the Soviet Zone of Germany according
to Age Groups and Sex in 1958, 1963 and 1965 per 31 December

Age Groups	Total			Male			Female			Total			Male			Female		
	1958	1963	1965	1958	1963	1965	1958	1963	1965	1958	1963	1965	1958	1963	1965	1958	1963	1965
	absolute number in 1,000 ¹⁾									percentage								
Less than 1 year old	263	294	275	135	151	142	128	143	133	1.5	1.7	1.6	1.7	1.9	1.8	1.3	1.5	1.4
1 to 3 years	524	580	575	269	298	294	255	283	281	3.0	3.4	3.4	3.5	3.8	3.8	2.7	3.0	3.0
3 to 6 years	810	811	859	416	416	439	394	395	420	4.7	4.7	5.0	5.3	5.3	5.6	4.1	4.2	4.5
6 to 10 years	1029	1040	1044	526	533	535	502	507	509	5.9	6.1	6.1	6.8	6.9	6.9	5.3	5.4	5.5
10 to 14 years	697	1048	1052	353	537	539	343	511	513	4.0	6.1	6.2	4.5	6.9	6.9	3.6	5.4	5.5
14 to 15 years	238	222	260	120	113	133	117	109	126	1.4	1.3	1.5	1.5	1.5	1.7	1.2	1.2	1.3
15 to 18 years	798	516	656	406	262	336	392	254	320	4.6	3.0	3.8	5.2	3.4	4.3	4.1	2.7	3.5
18 to 21 years	909	624	472	459	314	238	450	309	233	5.3	3.6	2.8	5.9	4.0	3.1	4.7	3.3	2.5
21 to 25 years	1068	1099	951	542	554	478	527	545	473	6.2	6.4	5.6	7.0	7.1	6.1	5.5	5.8	5.1
25 to 30 years	1058	1304	1340	513	661	675	545	643	665	6.1	7.6	7.9	6.6	8.5	8.7	5.7	6.8	7.2
30 to 35 years	976	1031	1084	409	500	546	567	531	537	5.6	6.0	6.4	5.3	6.4	7.0	5.9	5.6	5.8
35 to 40 years	985	947	1016	373	397	475	612	550	541	5.7	5.5	5.9	4.8	5.1	6.1	6.5	5.9	5.8
40 to 45 years	703	950	914	265	360	356	438	590	559	4.1	5.5	5.4	3.4	4.6	4.6	4.6	6.3	6.0
45 to 50 years	1221	671	665	480	253	253	741	418	412	7.1	3.9	3.9	6.2	3.3	3.2	7.9	4.4	4.4
50 to 55 years	1333	1158	1013	567	453	389	766	705	624	7.7	6.7	5.9	7.3	5.8	4.9	8.0	7.5	6.7
55 to 60 years	1289	1248	1197	565	526	485	725	722	712	7.4	7.3	7.0	7.3	6.8	6.2	7.6	7.7	7.7
60 to 65 years	1099	1171	1171	440	504	509	649	667	662	6.3	6.8	6.9	5.7	6.5	6.5	6.8	7.1	7.1
65 to 70 years	890	938	962	352	368	389	538	570	574	5.1	5.5	5.6	4.5	4.7	4.9	5.6	6.1	6.2
70 to 75 years	688	706	704	279	268	260	409	438	444	4.0	4.1	4.1	3.6	3.4	3.3	4.3	4.7	4.8
75 years and over	743	823	838	300	317	312	443	505	526	4.3	4.8	4.9	3.9	4.1	4.0	4.6	5.4	5.7
Total	17312	17181	17048	7770	7784	7783	9542	9397	9265	100.0	100.0	100.0	100.0	100.0	100.0	100.0	100.0	100.0

1) Round figures

Source: Statistical Yearbook of the "DDR", 1958, page 23; 1964, page 502
and 1966, page 520

NATO CONFIDENTIAL

Table 2 : Industrial Gross Production in the Soviet Zone
by Sectors and Selected Branches in Fixed Planning Prices ¹⁾

1958 to 1965

	1958	1959	1960	1961	1962	1963	1964 ⁵⁾		1965
							former column	new column	
	a) in million DM-East								
Basic products industry ²⁾	17,148	18,869	20,203	21,521	22,893	23,948	25,833	23,721	25,305
Metal-processing industry ³⁾	17,806	21,252	23,585	25,228	27,584	29,630	31,908	30,987	33,210
Light Industry ⁴⁾	13,159	14,727	15,514	16,272	17,104	16,950	17,614	17,574	18,464
Food products industry	8,901	9,333	10,129	10,526	10,529	10,963	11,518	11,373	11,898
Total industry	57,015	64,181	69,430	73,548	78,110	81,491	86,873	83,655	88,876
<u>of which</u>									
Mining	2,616	2,699	2,699	2,730	2,873	2,980	3,089	2,587	2,597
Metallurgy	3,729	4,135	4,577	4,826	5,002	5,073	5,413	4,072	4,272
Chemical industry	8,777	9,744	10,470	11,302	12,176	12,982	14,066	13,807	15,056
Mechanical engineering	5,871	7,089	7,910	8,715	9,608	10,078	10,876	10,763	11,448
Vehicle construction	3,853	4,463	4,831	5,098	5,341	6,043	6,344	5,585	5,746
Electrical industry	3,964	4,840	5,501	5,923	6,755	7,182	7,851	7,827	8,507
Precision and optical industry	1,162	1,340	1,438	1,508	1,657	1,802	1,950	1,944	2,253
Textile and clothing industry	7,613	8,439	8,753	9,099	9,519	9,313	9,549	9,536	10,002
Glass and ceramics industry	738	833	899	948	1,003	1,041	1,137	1,136	1,219

Footnotes see next page

Table 2 ctd.

	1958	1959	1960	1961	1962	1963	1964 5)		1965
							former column	new column	
b) shares in per cent									
Basic products industry 2)	30.1	29.4	29.1	29.3	29.3	29.4	29.7	28.4	28.5
Metal processing industry 3)	31.2	33.1	34.0	34.3	35.3	36.4	36.7	37.0	37.4
Light industry 4)	23.1	23.0	22.3	22.1	21.9	20.8	20.3	21.0	20.8
Food products industry	15.6	14.5	14.6	14.3	13.5	13.4	13.3	13.6	13.4
Total industry of which	100.0	100.0	100.0	100.0	100.0	100.0	100.0	100.0	100.0
Mining	4.6	4.2	3.8	3.7	3.7	3.7	3.6	3.1	2.9
Metallurgy	6.5	6.4	6.6	6.6	6.4	6.2	6.2	4.9	4.8
Chemical industry	15.4	15.2	15.1	15.4	15.6	15.9	16.2	16.5	16.9
Mechanical engineering	10.3	11.0	11.4	11.8	12.3	12.4	12.5	12.9	12.9
Vehicle construction	6.8	7.0	7.0	6.9	6.8	7.4	7.3	6.7	6.5
Electrical industry	7.0	7.5	7.9	8.1	8.6	8.8	9.0	9.4	9.6
Precision and optical industry	2.0	2.1	2.1	2.1	2.1	2.2	2.2	2.3	2.5
Textile and clothing industry	13.4	13.1	12.6	12.4	12.2	11.4	11.0	11.4	11.3
Glass and ceramics industry	1.3	1.3	1.3	1.3	1.3	1.3	1.3	1.4	1.4

- 1) Confirmed individual fixed prices or fixed uniform plan prices for certain products or groups of products based on manufacturing prices per 1 January 1955
- 2) Including coal and public utility services for power and gas
- 3) Mechanical engineering, vehicle construction, shipbuilding, foundries and forges, metal goods industry, electrical industry, precision and optical industry
- 4) Wooden and cultural products industry, textile industry, clothing and sewing products, leather, shoe and fur industry, pulp and paper industry, polygraphic industry, glass and ceramics industry
- 5) Since 1964, the figures of industrial gross production no longer include the consumption of coal, ore, crude iron and crude steel by the industry itself. Moreover, the material value of processing work does not appear twice and the railway repairshops no longer form part of the branch "Vehicle construction"

Source : Statistical Yearbook of the "DDR" 1960/61, page 282 ff, 1962, page 282 ff, 1966, page 156 ff

Table 3 : Industrial Production of Selected Products in
the Soviet Zone, 1963 to 1965

Products	Unit	Total absolute			Changes in per cent compared with the year before		Unit	Per capita production		
		1963	1964	1965	1964	1965		1963 ¹⁾	1964	1965
		Crude lignite	million t	254	257	251		1.1	-2.2	kg
Electrical energy	1000 mill.kwh	47.5	51.0	53.6	7.5	5.1	kwh	2790	3003	3148
Crude iron	mill. t	2.15	2.26	2.34	5.1	3.5	kg	127	133	137
Crude steel	mill. t	3.6	3.9	3.9	6.2	1.0	kg	214	227	228
Rolled steel, hot rolled	mill. t	2.8	2.9	3.0	3.1	3.0	kg	166	171	175
Sulphuric acid	1,000 t	750	765	804	2.0	5.1	kg	44.1	45.0	47.2
Nitrogenous fertilizer	1,000 t	340	324	348	-4.6	7.4	kg	20.1	19.1	20.5
Phosphoric fertilizer	1,000 t	196	198	232	0.8	17.2	kg	11.6	11.6	13.6
Cement	mill. t	5.46	5.77	6.09	5.7	5.6	kg	322	339	358
Yarn	1,000 t	275	268	270	-2.3	0.5	kg	16.2	15.8	15.8
Tissues	1,000 m ²	618	604	639	-2.3	5.8	m ²	36.5	35.5	37.5
Leather shoes	mill.pairs	27.8	28.3	29.0	2.5	2.2	pair	1.6	1.7	1.7
Paper	1,000 t	590	633	644	7.3	1.8	kg	34.8	37.2	37.8
Passenger cars	1,000 units	84	93	103	10.4	10.5	units ²⁾	5.0	5.5	6.0
Lorries	1,000 units	10	12	15	16.7	29.1	units ²⁾	0.6	0.7	0.9
Household refrigerators	1,000 units	245	324	365	32.1	12.6	units ²⁾	14.5	19.1	21.2
Electrical washing machines	1,000 units	256	277	289	8.3	4.4	units ²⁾	15.1	16.3	17.0
Television sets	1,000 units	580	591	537	1.9	-9.2	units ²⁾	34.2	34.8	31.5

1) Newly calculated on the basis of the 1964 census

2) Per 1,000 inhabitants

Source : Statistical Yearbook of the "DDR" 1965, page 162 ff and 1966, page 168 ff

Table 4 : Structural Development of Agriculture in the Soviet Zone¹⁾
 According to Number and Size of Farms
 (according to the agricultural census - 1939 and 1949 -
 and the Soil Utilization Surveys made in June of each year,
 for 1960 as per December)

Category of farm, size according to usable area	Number of Farms in 1,000 ²⁾											
	1939	1946	1949	1950	1955	1959	1960	1961	1962	1963	1964	1965
People's owned estates (VEG)				0.6 (559)	0.5 (540)	0.7 (688)	0.7 (669)	0.6 (641)	0.6 (634)	0.6 (618)	0.7 (658)	0.7 (660)
Other nationalized and state farms (SVB)				32.0	15.8	13.6	9.5	9.7	9.4	9.1	3.7 ⁺	3.8 ⁺
Agricultural production cooperatives (LPG) ³⁾				-	5.9	9.6	19.3	18.9	16.9	16.5	16.0	15.3
Horticultural production cooperatives (GPC)				-	.	.	0.3	0.3	0.4	0.4	0.4	0.4
Total "socialist" sector	-	.	.	32.6	22.2	23.9	29.8	29.5	27.3	26.6	20.8	20.2
+) = Excluding SVB and other socialist co-operatives within the competence of the "Kreis" Council												
Total private sector	572.3	745.4	770.2	855.6	781.0	343.1	30.2	28.2	19.9	17.4	15.5	13.8 ⁶⁾
Breakdown according to size:												
0.5 up to 1 ha	118.2	137.4	151.5	237.7	305.3
1 up to 5 ha	201.9	194.6	198.6	198.7	167.5	130.7
5 up to 10 ha	93.9	235.3	256.8	252.6	188.9	119.7
10 up to 20 ha	95.2	118.4	115.9	119.0	91.8	68.4
20 up to 50 ha	48.6	50.9	46.7	43.3	26.2	16.8
50 up to 100 ha	8.1	7.6	.	4.3	1.3	0.7
more than 100 ha	6.3	1.2	0.7
Church-owned farms ⁵⁾	1.3

Footnotes see next page

Table 4 : ctd.

- 1) No data can be taken from the official statistics for 1946 and 1949 concerning farms of the "Socialist sector"
- 2) Up to 1958 only farms with a usable area of 0.5 ha, as from 1959 farms with a usable area of more than 1 ha (excluding personal holdings of the LPG farmers).
- 3) Up to 1959 LPG including GPG and production co-operatives of gainfully employed fishermen.
- 4) Farms with and without commercial horticulture.
- 5) The church-owned farms are included in the SVB from 1950 to 1955. No official data are available for the other years. In the 1939 statistics they were included in the breakdown according to size.
- 6) The remaining 13,800 farms of the private sector include a small number of farms, especially commercial horticultural enterprises, church-owned farms, fruit-groves, tree-nurseries etc.

Source : 1939 and 1949 : Statistical Yearbook of the "DDR", 1957.

1946 : Statistical file of the DWK (unpublished restricted material) 1949.

1950 to 1965 : Statistical Yearbook of the DDR, 1966.

Table 5 : Structural Development of Agriculture in the Soviet Zone
(according to the Proportion of the Various Farm Categories in the Usable Agricultural Area, as per June of each Year, for 1960 as per December)

Category of Farm and Size	1939 ¹⁾	1950	1955	1959	1960 ²⁾	1961	1962	1963	1964	1965
Percentage of agricultural usable area of Central Germany in per cent										
People's owned estates (VEG)	-	2.7	4.4	6.0	6.3	6.3	6.4	6.4	6.4	6.7
Other nationalizes and state farms (SVB)	-	3.0	4.3	2.0	1.7	1.7	1.5	1.6	1.5	1.3
Agricultural production co-operatives (LPG) ³⁾	-	-	18.6	40.2	84.4	84.7	85.4	85.6	85.8	85.9
Type I/II ²⁾	-	-	(2.1)	(4.4)	(31.0)	(29.4)	(28.8)	(28.3)	(27.9)	(27.0)
Type III ²⁾	-	-	(16.5)	(35.8)	(53.2)	(55.0)	(56.4)	(57.0)	(57.6)	(58.6)
Total "socialist" sector	-	5.7	27.3	48.2	92.4	92.7	93.3	93.6	93.7	93.9
Total private sector	100.0	94.3	72.7	51.8	7.6	7.3	6.7	6.4	6.3	6.1
Breakdown according to size ⁴⁾										
up to 1 ha	1.4	6.4	7.3	6.9	-	-	-	-	-	-
1 to 5 ha	7.8	8.2	7.5	5.9	-	-	-	-	-	-
5 to 10 ha	10.6	29.6	24.1	15.3	-	-	-	-	-	-
10 to 20 ha	21.1	25.7	20.6	15.5	-	-	-	-	-	-
20 to 50 ha	22.4	20.2	11.9	7.4	-	-	-	-	-	-
50 ha to 100 ha	8.4	4.2	1.3	0.6	-	-	-	-	-	-
more than 100 ha	28.3	-	-	-	-	-	-	-	-	-
church-owned farms ⁵⁾	-	-	-	0.2	-	-	-	-	-	-

- 1) According to the agricultural census 1939 (territory of today's "DDR")
- 2) As per the end of the year
- 3) As from 1960 including horticultural production co-operatives (GPG), i.e. about 0.2 per cent
- 4) According to the usable agricultural area
- 5) The church-owned farms are included in the 1939 breakdown according to size, in the figures for 1950 to 1955 among the other nationalized and public farms. The data in the official statistics so not show their share in the usable area during these years.

Source : Statistical Yearbook of the "DDR" 1965 to 1966.

Table 6 : Production of Field Crops in the Soviet Zone -
1960 to 1965
(in 1,000 t)

Type of crop	1960	1961	1962	1963	1964	1965	average 1960/62	average 1963/65 absolute	compared with average 60/62 ± in per cent
Bread grain	3,582.3	2,542.7	3,041.3	2,955.2	3,238.6	3,711.4	3,055.4	3,301.7	+ 8.1
Fodder grain	2,796.7	2,299.9	2,895.3	2,580.6	2,946.0	3,018.9	2,664.0	2,848.5	+ 6.9
Total grain	6,379.0	4,842.6	5,936.6	5,535.8	6,184.6	6,730.3	5,719.4	6,150.2	+ 7.5
Legumes	97.3	109.0	132.4	100.0	115.5	153.5	112.9	123.0	+ 8.9
Oilseed 1)	195.0	179.3	183.6	138.1	183.7	223.3	186.0	181.7	- 2.3
Potatoes	14,820.7	8,429.6	13,284.0	12,886.1	12,871.5	12,856.6	12,178.1	12,871.4	+ 5.7
Sugar beets	6,837.0	4,656.7	4,969.9	6,176.3	6,003.2	5,803.8	5,487.9	5,994.4	+ 9.2
Average popu- lation in 1,000	17,241	17,125	17,102	17,155	16,992 ²⁾	17,028	17,156	17,058	- 0.6

1) Excluding seeds of fibre-plants

2) Calculated on the basis of preliminary figures of 1964 census

Source : Statistical Yearbook of the "DDR" 1966, page 3 and 285 to 294

NATO CONFIDENTIAL
ANNEX to
WORKING PAPER
AC/89-WP/213

Table 7 : Development of Cattle Stocks in the Soviet Zone,
 1960 to 1965
 (per 1,000 animals at years' end)

Animals	1960	1961	1962	1963	1964	1965	average 1960/62	average 1963/65 abso- lute	compared with ave- rage 60/62 ± in per cent
<u>Horses</u>	446.8	403.2	369.3	340.7	306.1	271.6	406.4	306.1	- 24.7
<u>Cattle total</u>	4,675.3	4,547.6	4,507.5	4,614.0	4,682.2	4,762.3	4,442.8	4,686.2	+ 5.5
of which cows	2,175.1	2,170.2	2,092.3	2,102.2	2,132.0	2,168.6	2,145.9	2,134.3	- 0.5
<u>Pigs total</u>	8,316.1	8,864.4	8,045.2	9,288.5	8,759.2	8,877.8	8,408.6	8,975.2	+ 6.7
of which stud sows	835.1	734.9	830.8	810.2	758.4	824.3	816.9	797.6	- 2.4
stud boars	32.3	29.3	31.0	34.3	33.9	33.2	30.9	33.8	+ 9.4
<u>Sheep total</u>	2,015.4	1,930.2	1,792.0	1,899.2	1,972.1	1,963.0	1,912.5	1,944.8	+ 1.7
of which mother sheep	834.0	744.7	706.2	703.5	685.3	652.0	761.6	680.3	- 10.7
<u>Goats</u>	438.9 ¹⁾	446.2 ²⁾	387.6 ¹⁾	396.5	353.2	302.2	424.2	350.6	- 17.4
<u>Poultry total</u>	36,909.9 ¹⁾	35,878.5 ¹⁾	35,626.3 ¹⁾	39,580.5	38,209.7	37,988.1	36,138.2	38,592.8	+ 6.8
of which laying hens	28,120.8 ¹⁾	22,880.4 ¹⁾	21,668.2 ¹⁾	22,398.3	24,557.8	26,008.5	24,223.1	24,321.5	+ 0.4

1) Excluding domestic animals in Berlin

2) As per middle of the year

Source : Statistical Yearbook of the "DDR" 1966, page 304

NATO CONFIDENTIAL

NATO CONFIDENTIAL
 ANNEX to
 WORKING PAPER
 AG/89-WP/213

Table 8 : Production of Slaughter Animals, Milk and Eggs
 in the Soviet Zone, 1960 to 1965
 (in 1,000 t or million animals)

Animal products	1960	1961	1962	1963	1964	1965	average 1960/62	average 1963/65 abs- olute	compared with ave- rage 60/62 † in per cent
1) <u>Slaughter animals</u>									
<u>live weight</u>									
total	1,362.7	1,406.8	1,225.2	1,346.3	1,494.2	1,576.9	1,331.6	1,472.4	+ 10.6
of which: pigs	842.6	844.7	671.7	813.0	935.5	997.0	786.3	915.2	+ 16.4
cattle (with- out calves)	353.3	389.7	393.9	365.0	377.9	409.7	379.0	384.2	+ 1.4
Calves	22.8	30.7	21.1	20.4	29.5	30.3	24.9	26.7	+ 7.2
Poultry	73.2	80.0	80.9	88.5	89.5	89.1	78.0	89.0	+ 14.1
Others	70.8	61.7	57.6	59.3	61.8	50.8	63.4	57.3	- 9.6
2) <u>Milk production</u>									
(Basis 3.5 % fat content)									
Cow milk	5,730.1	5,611.9	5,215.9	5,568.8	5,750.5	6,371.4	5,519.3	5,896.9	+ 6.8
Goat milk	281.9	243.0	208.8	204.3	196.8	171.1	244.6	190.7	- 22.0
Total milk	6,011.9	5,854.9	5,424.7	5,773.1	5,947.3	6,542.5	5,763.9	6,087.6	+ 5.6
3) <u>Eggs</u>									
(million pieces)	3,511.5	3,602.3	3,100.0	3,250.0	3,695.6	3,935.0	3,404.6	3,626.9	+ 6.5

Source : Statistical Yearbook of the "DDR" 1966, page 313 to 315

NATO CONFIDENTIAL

Table 9 : Net Yields of the Most Important Crops in the Soviet Zone 1960 to 1965 - in 100 kg/ha

(According to the official data of the Soviet-zonal agricultural statistics, not fully comparable with the yield per ha in the Federal Republic)

Type of crop	1960	1961	1962	1963	1964	1965	average 1960/62	average compared 1963/65 with absolute average 60/62	in per cent
Bread grain	26.3	21.1	24.6	23.7	25.8	28.3	24.1	26.0	+ 7.7
Fodder grain	29.2	22.3	28.6	26.0	28.6	30.5	26.7	28.3	+ 6.4
Total grain	27.5	21.7	26.4	24.7	27.0	29.2	25.2	27.0	+ 7.1
Legumes	10.7	12.2	13.8	10.5	12.1	16.8	12.3	13.1	+ 6.5
Oilseeds (excluding fibre-plants)	14.4	13.5	14.4	11.2	14.3	18.4	14.1	14.6	+ 3.5
Potatoes	192.4	123.7	179.0	172.6	172.8	177.2	166.5	174.2	+ 4.6
Sugar beets	287.6	213.8	213.8	266.0	261.3	263.1	239.3	263.5	+ 10.1

Source : Statistical Yearbook of the "DDR" 1966, page 282 ff.

As has been indicated at the end of footnote 1) in Table 10 of the previous report (1964), the yield calculation methods have apparently been changed after 1962.

Table 10 : Numbers of Tractors and Major Mechanical Equipment
in the "Socialist" Farms in the Soviet Zone, 1960 to 1965

	1960	1961	1962	1963	1964	1965
1) <u>Tractors</u> total	70,566	89,882	99,883	111,226	117,714	124,259
of which) in per cent)						
in VEG	9.0	7.9	7.7	7.7	7.8	7.9
in LPG	61.2	54.0	53.3	84.2	86.5	86.1

Comparison between the Soviet Zone and the Federal Republic as to the HP capacity per tractor and per 100 ha (in the Soviet Zone only for "socialist" farms which comprise about 94 per cent of the total usable area).

	1962/63 1963	1963/64 1964	1964/65 1965
a) <u>Average HP capacity per tractor</u>			
Federal Republic (agricultural year)	20.9	21.4	21.9
Soviet Zone (calendar year) absolute	34.0	34.3	35.3
in per cent of Fed.Rep.	163	160	161
b) <u>Tractor HP per 100 ha usable area</u>			
Federal Republic (agricultural year)	147.0	158.9	171.2
Soviet Zone (calendar years) absolute	63.2	67.5	73.3
in per cent of Fed.Rep.	43.0	42.5	42.8
c) <u>Tractor HP per 100 ha arable land</u>			
Federal Republic (agricultural year)	265.1	287.1	316.2
Soviet Zone (calendar years) absolute	83.3	88.8	96.4
in per cent of Fed.Rep.	31.4	30.9	30.5

Table 10 : contd.

	1960	1961	1962	1963	1964	1965
2) <u>Combined Harvesters</u>						
total	6,409	9,180	11,380	12,849	13,833	15,409
of which) in VEG	10.5	10.0	8.5	8.5	8.5	8.5
in per cent) in LPG	50.6	36.9	36.4	59.1	81.1	89.4
3) <u>Potato harvesters</u>						
total	6,386	7,803	7,472	6,899	6,606	6,843
of which) in VEG	8.2	7.9	8.1	8.7	8.3	7.4
in per cent) in LPG	50.6	41.6	43.7	66.6	81.0	90.2
4) <u>Combined beet harvesters</u> (since 1963 incl. diggers and lifters)						
total	3,665	4,116	4,533	4,802	4,820	4,742
of which) in VEG	9.0	8.8	8.5	8.9	8.6	8.7
in per cent) in LPG	63.2	55.1	53.4	72.9	82.5	86.6

in relation to LPG and VEG :

Year	a) Existing crop areas in ha per harvester			b) Reaped or rooted-out areas in per cent of total area		
	Grain per comb. harvester	Potatoes per harvester	Sugar beets	Grain withcomb. harvester	Potatoes with harvester	Sugar beets
1963	166	99	48	58.9	25.0	82.3
1964	157	102	48	66.5	29.3	85.5
1965	143	96	47	71.4	30.2	74.8

Source : For Soviet Zone : Statistical Yearbook of the "DDR" 1966, page 271-274
For Federal Republic : Statistical Yearbook of the Federal Ministry for
Agriculture, 1965, page 55 and 65

Table 11 : Production, Foreign Trade and Supplies of Mineral Fertilizer
to Agriculture in the Soviet Zone, 1960 to 1965
Fertilizer in 1,000 t of Pure Nutritional Substance

	1960	1961	1962	1963	1964	1965
1) <u>Nitrogen (N)</u>						
Production	334.1	330.1	338.2	340.0	334.2	348.4
Imports	2.3	20.1	20.2	24.8	70.5	134.6
Exports	114.0	105.9	101.1	92.7	66.7	73.2
Exports surplus (-)	- 111.7	- 85.8	- 80.9	- 67.9		
Import surplus (+)					+ 3.8	+ 61.4
Available	222.4	244.3	257.3	272.1	338.0	409.8
for agricultural supplies	235.4	255.9	257.2	289.0	330.4	413.8
Remark: Initial and final stocks are unknown						
2) <u>Phosphoric acid (P₂O₅)</u>						
Production	165.8	171.9	181.0	196.3	197.9	231.8
Imports	57.1	59.2	25.5	45.0	94.3	88.1
Available	222.9	221.1	206.5	241.3	292.2	319.9
for agricultural supplies	218.1	225.1	203.3	242.3	312.1	313.2
Remark: Initial and final stocks are unknown						
3) <u>Potash (K₂O)</u>						
For agricultural supplies	497.0	513.4	511.3	544.6	542.8	585.6
Remark: No production and foreign trade data are available						

Table 11 ctd.

Agricultural Supplies per Economic Year

a) in 1,000 t		1959/60	1960/61	1961/62	1962/63	1963/64	1964/65		
Nitrogen (N)		243.8	247.2	254.3	272.7	307.7	397.1		
Phosphoric acid (P ₂ O ₅)		210.2	225.5	210.9	223.7	263.1	334.4		
Potash (K ₂ O)		528.6	528.1	494.1	527.3	542.7	545.3		
Lime (CaO)		823.4	751.8	757.2	884.1	1,168.8	1,286.0		
b) kg per ha of usable agricultural area compared with the Federal Republic									
Nitrogen (N)	Sov.Z.	38.0	38.5	39.8	42.8	48.3	62.4		
	Fed.R.	43.6	43.4	43.7	54.5	52.7	55.5		
Phosphoric acid (P ₂ O ₅)	Sov.Z.	32.7	35.1	33.0	35.1	41.3	52.6		
	Fed.R.	50.9	46.4	44.6	50.7	53.9	57.7		
Potash (K ₂ O)	Sov.Z.	82.3	82.3	77.3	82.8	85.2	85.7		
	Fed.R.	73.0	70.6	72.9	77.5	79.4	83.8		
c) <u>The relation of nutritional substances</u>				N	:	P ₂ O ₅	:	K ₂ O	
between N : P ₂ O ₅ : K ₂ O, especially				1959/60	1	:	0.86	:	2.16
between N : K ₂ O changed in the Soviet				1960/61	1	:	0.91	:	2.14
Zone continuously in favour of				1961/62	1	:	0.83	:	1.94
Nitrogen (N = 1)				1962/63	1	:	0.82	:	1.93
				1963/64	1	:	0.86	:	1.76
				1964/65	1	:	0.84	:	1.37

Source : Statistical Yearbooks of the "DDR" up to 1966

Statistical Yearbooks of the Federal Ministry of Agriculture

NATO CONFIDENTIAL

NATO CONFIDENTIAL
ANNEX to
WORKING PAPER
AC/89-WP/213

Table 12 : Number of People Gainfully Employed in the Soviet Zone
(without Apprentices) by Economic Branches

	1958 ¹⁾	1959 ¹⁾	1960 ²⁾	1961 ²⁾	1962 ²⁾	1963 ²⁾	1964 ²⁾	1965 ²⁾
	a) in 1,000							
Industry 3)	2,783	2,801	2,803	2,807	2,779	2,785	2,743	2,747
Building industry including ancillary crafts	448	450	455	442	456	458	435	442
Producing crafts (without building trade)	462	435	414	402	404	395	398	393
Agriculture, forestry and water economy	1,524	1,448	1,366	1,381	1,392	1,261 ⁴⁾	1,267	1,249
Transport	390	389	393	399	389	388	426	419
Post and Telecommunication	126	124	128	133	136	133	134	134
Trade and commerce	880	884	892	904	882	864	876	889
Sectors outside material production 5)	1,169	1,289	1,288	1,318	1,348	1,363	1,379	1,402
Total	7,783	7,820	7,739	7,787	7,786	7,646	7,658	7,676
plus apprentices	406	359	307	247	260	299	353	396
	b) in per cent							
Industry 3)	35.8	35.8	36.2	36.0	35.7	36.4	35.8	35.8
Building industry including ancillary crafts	5.8	5.8	5.9	5.7	5.9	6.0	5.7	5.8
Producing crafts (without building trade)	5.9	5.6	5.4	5.2	5.2	5.2	5.2	5.1
Agriculture, forestry and water economy	19.6	18.5	17.7	17.7	17.9	16.5 ⁴⁾	16.5	16.3
Transport	5.0	5.0	5.1	5.1	5.0	5.1	5.6	5.5
Post and Telecommunication	1.6	1.6	1.7	1.7	1.8	1.7	1.8	1.8
Trade and commerce	13.1	11.1	11.5	11.6	11.3	11.3	11.4	11.6
Sectors outside material production 5)	15.0	16.5	16.6	16.9	17.3	17.8	18.0	18.3
Total	100.0	100.0	100.0	100.0	100.0	100.0	100.0	100.0

1) As per 31 December

2) As per 30 September

3) Excluding uranium ore mining, armaments industry, prisoners (estimated at 85,000 in total in 1963).

4) Excluding the non-working members of production cooperatives not shown in the statistics who were estimated at about 100,000 in 1963

5) see verso

NATO CONFIDENTIAL

NATO CONFIDENTIAL
ANNEX to
WORKING PAPER
AC/89-WP/213

Table 12 ctd.

- 5) Excluding soldiers, members of the police etc; as from 1961 excluding people employed by "social organizations" (1960 : 50,500). In the official figures showing people gainfully employed in the sector outside material production about 345,000 were not listed in 1963.

Source : Statistical Yearbook of the "DDR" 1964, page 41 and 1966, page 63

NATO CONFIDENTIAL

Table 13 : Investments in the Soviet Zone, 1958 to 1965 .

	1958	1959	1960	1961	1962	1963	1964	1965
	in million DM-East							
I. Gross investment in fixed assets, total ¹⁾	12,124	14,105	15,571	15,575	15,862	16,721	18,183	19,589
1. Government Sector	9,798	11,360	12,196	12,757	13,056	14,339	15,518	16,925
a) Industry and building industry	5,277	6,215	6,889	7,380	7,394	8,570	9,195	10,155
b) Agriculture, forestry and water	876	1,178	1,329	1,311	1,294	1,151	1,181	1,269
c) Transport, PTT	1,154	1,881	1,914	2,087	1,898	1,911	2,445	2,962
d) other sectors	2,091	2,086	2,064	1,979	2,470	2,707	2,697	2,539
2) Non-government sector 2)	2,326	2,745	3,371	2,818	2,806	2,382	2,665	2,663
II. Inventory investments 3)	3,720	2,910	1,560	1,020	3,620	2,330	2,690	3,250
Total gross investments in fixed assets	15,844	17,015	17,131	16,595	19,482	19,051	20,873	22,839
	in per cent							
I. Gross investment in fixed assets, total ¹⁾	76.5	82.9	90.9	93.9	81.4	87.8	87.1	85.8
1) Government Sector	61.8	66.8	71.3	76.9	67.0	75.3	74.3	74.1
a) Industry and building industry	33.3	36.5	36.3	44.5	38.0	45.0	44.1	44.5
b) Agriculture, forestry and water	5.5	6.9	7.8	7.9	6.6	6.1	5.6	5.5
c) Transport, PTT	7.3	11.1	11.2	12.6	9.7	10.0	11.7	13.0
d) other sectors	13.2	12.3	12.0	11.9	12.7	14.2	12.9	11.1
2) Non-government sector 2)	14.7	16.1	19.7	17.0	14.4	12.5	12.8	11.7
II. Inventory investments 3)	23.5	17.1	9.1	6.1	18.6	12.2	12.9	14.2
Total gross investments in fixed assets	100.0	100.0	100.0	100.0	100.0	100.0	100.0	100.0

1) Statistical Yearbook of the "DDR" 1966, page 51, table 1

2) Cooperatives, semi-governmental and private

3) For 1958 and 1959 calculated from the Statistical Yearbook of the "DDR" 1964, page 36, table 6 together with page 352 table 4; for 1960 to 1965 calculated from the Statistical Yearbook of the "DDR" 1966, page 50, table 8 together with page 358, table 3.

Table 14 : Gross investments in fixed assets 1)

	Unit	1958	1959	1960	1961	1962	1963	1964	1965	1959-1965 total
Actual figures	Mill. DM									
	East	12,125	14,105	15,571	15,575	15,862	16,721	18,183 ²⁾	19,589 ²⁾	115,606
Rates of growth	per cent	+	+ 16.7	+ 10.0	± 0	+ 1.8	+ 5.3	+ 8.7	+ 7.7	.
Target figures of the 1st Seven-Year Plan ³⁾		12,300	14,600	16,800	18,800	20,700	22,300	23,800	25,000	142,000

	Unit	1963	1964	1965	1966	1967	1968	1969	1970	1964-1970 total
Target figures of the 1,000 Mill.										
2nd Seven-Year-Plan	DM-East	16.8	18.1	19.5	21.0	22.6	24.3	26.1	28.1	160
Rates of growth	per cent		+ 7.5	+ 7.5	+ 7.5	+ 7.5	+ 7.5	+ 7.5	+ 7.5	

- 1) The figures listed in this table as "gross investment in fixed assets" are, unless stated otherwise, the official investment figures taken from the Statistical Yearbook of the "DDR" and official plans
- 2) According to the fulfilment report of the Central Statistical Administration investments contained in the economic plan for 1964 only reached 17,400 million DM-East (compared with 16,400 million in the year before). The rest are investments outside the plan. In all years including 1965, the investment plan has not been fulfilled, according to the report mentioned above.
- 3) Of the target figures for the 1st Seven-Year Plan only the figures for the basic year (1958) and the final year (1965) as well as the total amount could be found in official documents. The target figures for 1961 could be gathered from references in official speeches, while the figures for the remaining years have been estimated accordingly.
- 4) The target figures for the 2nd Seven-Year Plan result from the official figure for the basic year (target figure 1963 = 16,800 million DM-East), the official figure for the final year and the official total amount.

Table 15 : Gross fixed investments according to Economic Branches 1)

Economic branch	1963	1964	1963	1964
	in mill.	DM-East	share	in per cent
Industry	8,370	8,848	50.1	48.7
of which: Energy	1,222	1,348	7.3	7.4
Mining	1,758	1,869	10.5	10.3
Chemical industry	1,113	1,250	6.7	6.9
Metallurgy	1,538	1,746	9.2	9.6
Building industry	349	450	2.1	2.5
Agriculture and forestry	2,181	2,419	13.0	13.3
Transport, Post and Telecommunications	1,795	1,931	10.7	10.6
Trade and commerce	464	556	2.8	3.0
Culture, health and social services	632	559	3.8	3.1
Housebuilding	1,748	1,799	10.4	9.9
Other branches	1,182	1,621	7.1	8.9
Total	16,721	18,183	100.0	100.0

1) For the other years, no such detailed statistical data are available

Source : Statistical Yearbook of the "DDR", 1965, page 43/44; 1966, page 51/52

Table 16 : Social income in the Soviet Zone and in the Federal Republic of Germany per head of the population (in DM-East and DM-West)

Types of income	1960	1961	1962	1963	1964
	Soviet Zone ¹⁾				
Old age, disability, accident and survivors' insurance 2)	305	320	329	338	383
Health insurance cash payments 3)	71	73	75	69	71
War victim's pension	14	13	12	10	10
Other services 4)	83	83	83	83	84
Total public social income	473	489	499	500	548
	Federal Republic of Germany ¹⁾				
Old age, disability, accident and survivors' insurance 5)	444	483	518	558	608
Health insurance cash payments 3)	56	62	66	67	69
War victim's pension	63	70	68	63	75
Other services 6)	99	101	120	127	135
Total public social income	662	716	772	815	887

- 1) Soviet Zone including East-Berlin; Federal Republic including Berlin (West) and the Saar
- 2) Including "old age insurance of the Intelligentsia"
- 3) Sickness payments, out-patients' allowance and pocket money; cash-payments as maternity benefits, death benefits etc.
- 4) Social security and unemployment relief payments, national children's and family allowances, support for mother and child etc.
- 5) Including civil servants' retirement pensions and pensions under art. 131 of the Basic Law, without equalisation of burdens, war damage pensions and restitution payments
- 6) Social security and unemployment relief payments, children's allowance, equalisation of burdens payments etc.

Source : German Institute for Economic Research, Weekly Report of 30 April 1965 (No.18) page 85

Table 17 : Share of the various forms of ownership in the "total social product" by economic sectors for the years 1950 to 1965 ¹⁾ (in per cent)

Year	Gross product total	Industry and producing crafts (excl. building trade)	Building industry	Agriculture and forestry	Transport PTT	Commerce	Other sectors
" S o c i a l i z e d "							
(People-owned and co-operative)							
1950	61.8	70.7	31.6	12.6	83.6	62.1	88.1
1955	73.3	78.9	56.0	25.0	87.7	83.8	91.5
1960	84.4	84.5	78.0	80.1	92.6	86.6	92.7
1961	85.5	84.6	79.5	88.6	93.5	87.8	93.2
1962	85.5	84.5	79.3	89.4	94.0	87.9	92.9
1963	85.5	84.2	79.3	89.9	94.4	87.7	93.4
1964	86.5	85.3	82.4	90.5	95.0	88.5	93.4
1965 2)	86.8	85.7	83.4	90.7	94.6	88.6	93.9
"people-owned"							
1950	56.3	69.0	31.6	12.6	83.6	29.1	88.1
1960	70.9	79.4	64.4	16.3	92.6	57.4	92.2
1963	71.2	78.8	64.0	17.9	94.4	59.7	92.6
1964	72.7	80.2	68.9	17.5	95.0	62.3	92.6
1965 2)	72.8	80.4	70.6	17.2	94.6	63.0	93.3
"Co-operative"							
1950	5.5	1.7	-	-	-	33.0	-
1960	13.4	5.1	13.6	63.9	-	29.1	0.4
1963	14.2	5.4	15.3	72.0	-	28.0	0.8
1964	13.8	5.1	13.5	73.0	-	26.3	0.7
1965 2)	14.0	5.2	12.8	73.5	-	25.6	0.6
"S e m i - g o v e r n m e n t a l "							
(incl. firms working under a commission contract)							
1950	-	-	-	-	-	-	-
1960	5.5	6.5	8.1	-	2.0	4.6	1.7
1963	6.7	8.1	9.0	-	2.3	5.0	1.9
1964	6.6	7.9	7.8	0.2	2.1	4.9	2.4
1965 2)	6.6	8.0	7.5	0.2	2.2	4.9	2.1
" P r i v a t e "							
1950	38.2	29.3	68.4	87.4	16.4	37.9	11.9
1960	10.1	9.0	14.0	19.9	5.4	8.8	5.7
1963	7.8	7.6	11.6	10.1	3.3	7.3	4.7
1964	6.9	6.7	9.8	9.3	2.9	6.5	4.2
1965 2)	6.6	6.3	9.1	9.1	3.2	6.5	4.0

1) The above table is not based on former data. Since the publication of the Statistical Yearbook of the "DDR" 1965, new data have been available for almost all items of this table. Since that year the data for industry and the producing crafts (without building trade) are shown together

2) Provisional figures

Source : Statistical Yearbook of the
 "DDR" 1966, page 37

NATO CONFIDENTIAL

Table 18 : Foreign Trade Turnover of the Soviet Zone,
1958 to 1965 (without intra-German trade)
(in 1.000 million convertible marks and per cent)

Country or group of countries	1958		1963		1964		1965	
	1.000 m.c.m.	per cent	1.000 m.c.m.	per cent	1.000 m.c.m.	per cent	1.000 m.c.m.	per cent
Soviet Union	6.5	48	10.3	53	10.9	51	10.6	47
COMECON countries without SU	3.5	26	5.5	29	6.0	28	6.6	30
Other communist countries	1.3	9	0.8	4	1.0	5	1.0	5
Total communist countries	11.3	83	16.6	86	17.9	84	18.2	82
Free world	2.2	17	2.7	14	3.3	16	4.1	18
Total foreign trade turnover	13.5	100	19.3	100	21.2	100	22.3	100

Sources : Figures for 1958 : Statistical Yearbook of the "DDR" 1964,
page 382; for 1960 to 1965 - Statistical Yearbook of the
"DDR" 1966, page 388 ff; other data calculated accordingly

Table 19 : Foreign Trade Turnover of the
Soviet Zone, 1958 to 1965
(without intra-German trade)
Index of Turnover 1958 = 100

Country or group of countries	1958	1963	1964	1965
Soviet Union	100	158	168	163
COMECON countries without SU	100	157	171	189
Other communist countries	100	62	77	77
Total communist countries	100	148	159	162
Free World	100	121	148	183
Total foreign trade turnover	100	143	157	165

Source : Data calculated according to table 18

Table 20 : Foreign Trade of the Soviet Zone, 1958 to 1965
(without intra-German trade)

Exports and Imports
(Million convertible marks, 1958 = 100)

	1958	1960	1961	1962	1963	1964	1965
Total trade	13,496	16,576	17,256	18,390	19,334	21,183	22,352
1958 = 100	100	123	128	136	143	157	166
Exports fob	7,154	8,257	8,660	9,102	10,374	11,199	11,658
1958 = 100	100	115	121	127	145	156	163
Imports fob	6,342	8,319	8,596	9,288	8,960	9,984	10,694
1958 = 100	100	131	136	146	141	157	168
Balance	+ 812	- 62	+ 64	- 186	+ 1.414	+ 1.215	+ 964

Sources : Figures for 1958 : Statistical Yearbook of the "DDR" 1964, page 382; for 1960 to 1965 : Statistical Yearbook of the "DDR", 1966, page 388 ff; other data calculated accordingly.

Table 21 : Foreign Trade of the Soviet Zone with
Communist Countries

Exports (in million convertible marks)

(Share in total exports from the Soviet Zone in per
cent)

	1958	1960	1961	1962	1963	1964	1965
Soviet Union	3,554	3,884	3,830	4,590	5,361	5,811	5,505
per cent	49.6	47.0	44.2	50.5	51.7	51.9	47.2
Other COMECON countries	1,915	2,509	2,882	2,886	3,231	3,237	3,635
per cent	26.8	30.4	33.3	31.6	31.1	28.9	31.1
Communist countries of Asia	604	475	280	136	74	88	150
per cent	8.4	5.7	3.2	1.5	0.7	0.8	1.3
Yugoslavia	107	144	166	147	206	282	256
per cent	1.5	1.8	1.9	1.6	2.0	2.5	2.2
Cuba	1	11	116	96	130	138	101
per cent	0.0	0.1	1.3	1.1	1.3	1.2	0.9
Total	6,181	7,023	7,274	7,855	9,002	9,556	9,647
per cent	86.3	85.0	83.9	86.3	86.8	85.3	82.8
1958 = 100	100	114	118	127	146	155	156

Sources : Figures for 1958: Statistical Yearbook of the "DDR" 1964,
page 382; for 1960 to 1965 : Statistical Yearbook of the
"DDR" 1966, page 388 ff; other data calculated accordingly

Table 22 : Foreign Trade of the Soviet Zone with Communist Countries

Imports (in million convertible marks)

(Share in total imports to the Soviet Zone in per cent)

	1958	1960	1961	1962	1963	1964	1965
Soviet Union	2,943	4,024	4,497	5,234	4,926	5,087	5,064
per cent	46.3	48.4	52.3	56.4	55.0	51.0	47.4
Other COMECON countries	1,543	2,109	2,311	2,341	2,248	2,766	2,949
per cent	24.3	25.4	26.9	25.2	25.1	27.7	27.6
Communist countries of Asia	482	469	201	174	127	102	145
per cent	7.6	5.6	2.3	1.9	1.4	1.0	1.4
Yugoslavia	101	186	113	153	157	271	329
per cent	1.6	2.2	1.3	1.7	1.8	2.7	3.1
Cuba	2	18	49	116	167	72	111
per cent	0.0	0.2	0.6	1.3	1.9	0.7	1.0
Total	5,071	6,806	7,171	8,018	7,625	8,298	8,598
per cent	79.8	81.8	83.4	86.5	85.2	83.1	80.4
1958 = 100	100	134	141	158	151	164	170

Sources : Figures for 1958 : Statistical Yearbook of the "DDR" 1964, page 382; for 1960 to 1965 : Statistical Yearbook of the "DDR" 1966, page 388 ff; other data calculated accordingly

Table 23 : Total foreign Trade with
Communist Countries
(in million convertible marks)

	1958	1960	1961	1962	1963	1964	1965
Exports	6,181	7,023	7,274	7,855	9,002	9,556	9,647
Imports	5,071	6,806	7,171	8,018	7,625	8,298	8,598
Balance	+ 1,110	+ 217	+ 103	- 163	+ 1,377	+ 1,258	+ 1,049

Sources : Figures for 1958 : Statistical Yearbook of the "DDR" 1964, page 382; for 1960 to 1965 : Statistical Yearbook of the "DDR" 1966, page 388 ff; other data calculated accordingly

Table 24 : Foreign Trade of the Soviet Zone
with the Soviet Union

(in million convertible marks)

	1958	1960	1961	1962	1963	1964	1965
Exports	3,554	3,884	3,830	4,590	5,361	5,811	5,505
Share in total exports of the Soviet Zone in per cent	49.6	47.0	44.2	50.5	51.7	51.9	47.2
1958 = 100	100	109	108	129	151	164	155
Imports	2,943	4,024	4,497	5,234	4,926	5,087	5,064
Share in total imports of the Soviet Zone in per cent	46.3	48.4	52.3	56.4	55.0	51.0	47.4
1958 = 100	100	137	153	178	167	173	172
Balance	+ 611	- 140	- 667	- 644	+ 435	+ 724	+ 441

Sources : Figures for 1958 : Statistical Yearbook of the "DDR" 1964, page 382; for 1960 to 1965 : Statistical Yearbook of the "DDR" 1966, page 388 ff; other data calculated accordingly

Table 25 : Principal Goods Exported from the
 Soviet Zone to the Soviet Union in
 1967 under the "Friendship Agreement"

Hydraulic presses	525
Machine tools	1,622
Textile machines	4,068
Machines for the food and luxury goods industry	2,712
Dredges	169
Cranes	355
Ships	54 units
Long distance railroad cars	705
Refrigerator cars	925
Agricultural machinery	7,805
Diesel engines	1,147
Electrical motors	227,000
Furniture	215.3 mill.conv.marks
Toys	45.8 mill.conv.marks
Baby carriages	10.3 mill.conv.marks
Pianos and grand pianos	7,360
Washing agents	10,500 tons
Electrical lamps	36.9 mill.conv.marks

Source : Sölle (Minister of Foreign Trade) : "Trade between
 the DDR and the USSR: the Friendship Agreement in
 Action." Published in: "Die Wirtschaft", Edition A No.1
 dated 5 January 1967, page 6 ff.

Table 26 : Principal Goods Imported by the Soviet Zone
 from the Soviet Union in 1967 under the
 "Friendship Agreement"

Coal and coke	almost	7	mill.tons
Oil	over	6	mill.tons
Iron ore		1.2	mill.tons
Rolling-mill products	over	2.2	mill.tons
Non-ferrous metals	over	220,000	tons
Fibrous wood and timber	over	2	mill. m ³
Pulp		47,000	tons
Paper		46,000	tons
Cardboard		41,000	tons
Wool		15,000	tons
Cotton		82,000	tons
Oil seeds		80,000	tons
Butter		15,000	tons
Vegetable oil		70,000	tons

Table 27 : Planned Share of Raw Material in the Total
 Imports of the Soviet Zone from the
 Soviet Union in 1967

Rolled steel	85.8	per cent
Iron ore	81.9	per cent
Coke	46.0	per cent
Hard coal	57.8	per cent
Oil	88.0	per cent
Wool	65.6	per cent
Cotton	90.3	per cent
Passenger cars	59.0	per cent

Source for tables 26 and 27 : Sölle (Minister of Foreign Trade) :
 "Trade between the DDR and the USSR: The Friendship Agreement
 in Action." Published in : "Die Wirtschaft", Edition A No. 1
 dated 5 January 1967, page 6 ff.

Table 28 : Foreign Trade of the Soviet Zone with
 COMECON countries 1) excluding the Soviet Union
 (in million convertible marks)

	1958	1960	1961	1962	1963	1964	1965
Exports	1,915	2,509	2,882	2,886	3,231	3,237	3,635
Imports	1,543	2,109	2,311	2,341	2,248	2,766	2,949
Balance	+ 372	+ 400	+ 571	+ 545	+ 983	+ 471	+ 686

Table 29 : Foreign Trade of the Soviet Zone with
 Communist Countries of Asia 2)
 (in million convertible marks)

	1958	1960	1961	1962	1963	1964	1965
Exports	604	475	280	136	74	88	150
Imports	482	469	201	174	127	102	145
Balance	+ 122	+ 6	+ 79	-38	- 53	- 14	+ 5

1) Albania, Bulgaria, CSSR, Poland, Rumania, Hungary, Mongolia

2) People's Republic of China, People's Republic of Korea,
 People's Republic of Vietnam

Source for Table 28 and 29 : Figures for 1958: Statistical Yearbook of the "DDR" 1964, page 382; for 1960 to 1965: Statistical Yearbook of the "DDR" 1966, page 388; other data calculated accordingly

Table 30 : Foreign Trade of the Soviet Zone with the
 Free World without intra-German Trade
 (in million convertible marks)

	1958	1960	1961	1962	1963	1964	1965
Exports	973	1,235	1,386	1,247	1,371	1,643	2,011
Share in total exports of the Soviet Zone in per cent	13.6	14.9	16.0	13.7	13.2	14.7	17.2
1958 = 100	100	127	142	128	141	169	207
Imports	1,271	1,513	1,425	1,270	1,334	1,686	2,096
Share in total imports of the Soviet Zone in per cent	20.1	18.2	16.6	13.7	14.9	16.9	19.6
1958 = 100	100	119	112	100	105	132	164
Balance	- 298	- 278	- 39	- 23	+ 37	- 43	- 85

Sources: Figures for 1958: Statistical Yearbook of the "DDR" 1964, page 382; for 1960 to 1965: Statistical Yearbook of the "DDR" 1966, page 388 ff; other data calculated accordingly

Table 31 : Exports from the Soviet Zone to Various
Western Countries
(in million convertible marks)

Country	1960	1961	1962	1963	1964	1965
Belgium/Luxembourg	65.3	62.8	70.5	70.3	87.6	108.2
Denmark	66.1	65.2	63.3	78.4	81.6	93.2
Finland	58.3	69.2	64.6	54.6	59.4	58.8
France	36.3	46.5	41.5	45.9	53.2	68.0
Great Britain	84.4	74.5	81.1	89.6	110.7	154.8
Italy	56.2	57.9	52.9	59.5	55.5	67.0
Japan	5.9	44.0	13.2	28.7	41.2	14.4
Canada	4.2	4.6	4.4	5.2	7.0	7.2
Netherlands	88.0	92.2	77.6	94.3	133.2	160.7
Norway	29.5	30.8	20.5	23.4	38.8	44.4
Austria	75.2	115.2	93.4	79.1	89.4	98.6
Sweden	70.5	65.6	69.9	69.9	83.3	105.0
USA	17.0	16.1	14.8	15.8	19.2	29.5
Total	656.9	744.6	667.7	714.7	860.1	1,009.8

Source : Statistical Yearbook of the "DDR" 1966, page 388

Table 32 : Imports by the Soviet Zone from
Various Western Countries
(in million convertible marks)

Country	1960	1961	1962	1963	1964	1965
Belgium/Luxembourg	88.7	85.2	72.2	42.1	52.6	81.9
Denmark	73.7	48.9	92.7	62.9	75.1	88.4
Finland	53.1	54.7	55.8	49.5	52.7	53.7
France	77.3	117.1	61.8	70.0	96.3	177.3
Great Britain	178.6	215.2	140.5	178.3	130.4	177.6
Italy	48.8	77.3	48.3	68.4	64.8	98.3
Japan	0.5	3.9	4.0	8.6	7.8	16.8
Canada	8.1	6.6	6.1	8.2	61.6	73.7
Netherlands	92.1	90.3	61.3	77.7	112.1	111.8
Norway	32.5	26.8	25.4	26.1	60.0	35.3
Austria	88.5	86.6	73.9	94.6	96.7	130.1
Sweden	113.5	74.2	104.3	92.1	101.3	137.0
USA	22.4	15.5	5.8	5.7	40.8	28.0
Total	877.8	902.3	751.1	784.2	952.2	1,209.9

Source : Statistical Yearbook of the "DDR" 1966, page 389

Table 33 : Foreign Trade of the Soviet Zone with NATO Countries¹⁾ excluding the Federal Republic of Germany
 (in million convertible marks)

	1958	1960	1961	1962	1963	1964	1965
Exports	466	487	508	477	533	658	829
Share in total exports of the Soviet Zone in per cent	6.5	5.9	5.9	5.2	5.1	5.9	7.1
1958 = 100	100	105	109	102	114	141	178
Imports	624	671	740	544	584	737	949
Share in total imports of the Soviet Zone in per cent	9.9	8.1	8.6	5.9	6.5	7.4	8.9
1958 = 100	100	107	119	87	94	118	152
Balance	- 158	- 184	- 232	- 67	- 51	- 79	- 120

1) Belgium-Luxembourg, Denmark, France, Greece, Great Britain, Iceland, Italy, Netherlands, Norway, Turkey, USA, Canada

Sources : For 1958 : Statistical Yearbook of the "DDR" 1964, page 382; for 1960 to 1965: Statistical Yearbook of the "DDR" 1966, page 388 ff; other data calculated accordingly

Table 34 : Foreign Trade of the Soviet Zone with
the five most important Western trade
partners¹⁾
(in million convertible marks)

	1958	1960	1961	1962	1963	1964	1965
Exports	287	384	413	385	411	498	612
Share in total exports of the Soviet Zone in per cent	3.9	4.6	4.8	4.2	4.1	4.4	5.3
1958 = 100	100	134	144	134	143	173	213
Imports	417	546	515	473	506	516	645
Share in total imports of the Soviet Zone in per cent	6.6	6.6	6.0	5.1	5.7	5.2	6.0
1958 = 100	100	131	124	113	121	124	155
Balance	- 130	- 162	- 102	- 88	- 95	- 18	- 33

1) Denmark, Great Britain, Netherlands, Austria, Sweden

Sources : Figures for 1958: Statistical Yearbook of the "DDR" 1964, page 382; for 1960 to 1965: Statistical Yearbook of the "DDR" 1966, page 388 ff; other data calculated accordingly

Table 35 : Foreign Trade of the Soviet Zone with
 Developing Countries¹⁾
 (in million convertible marks)

	1960	1961	1962	1963	1964	1965
Exports	387	541	374	366	449	573
Share in total exports in the Soviet Zone in per cent 2)	4.7	6.3	4.2	3.6	4.0	5.0
1958 = 100	100	140	97	95	116	148
Imports	400	366	349	363	440	510
Share in total imports in the Soviet Zone in per cent 2)	4.8	4.3	3.8	4.1	4.4	4.9
1958 = 100	100	92	87	91	110	128
Balance	- 13	+ 175	+ 25	+ 3	+ 9	+ 63

1) See remarks on the tables showing the regional composition of Soviet-zonal foreign trade

2) Excluding the Federal Republic of Germany

Sources : Figures for 1958 to 1965: Statistical Yearbook of the "DDR" 1966, page 387; other data calculated accordingly

Table 36 : Foreign Trade of the Soviet Zone with Cuba
 (in million convertible marks)

	1958	1960	1961	1962	1963	1964	1965
Exports	1	11	116	96	130	138	101
Share in total exports of the Soviet Zone in per cent	0.0	0.1	1.3	1.1	1.3	1.2	0.9
Imports	2	18	49	116	167	72	111
Share in total imports of the Soviet Zone in per cent	0.0	0.2	0.6	1.3	1.9	0.7	1.0
Balance	- 1	- 7	+ 67	- 20	- 37	+ 66	- 10

Sources : Figures for 1958: Statistical Yearbook of the "DDR" 1964, page 382; for 1960 to 1965: Statistical Yearbook of the "DDR" 1966, page 388 ff.; other data calculated accordingly

Table 37 : Composition of Soviet-zonal exports to the
Soviet Union by categories of goods and
selected products 1)

(based on Soviet import statistics)
(in million rubles 2))

Categorie of goods, product	1958	1960	1961	1962	1963	1964
Rolling stock	70	84	81	98	112	102
including: passenger carriages	43	43	43	44	53	50
refrigerator cars	3	13	13	21	25	23
electrical locomotives for industry	11	16	13	20	17	11
Clothes and underwear	28	35	40	61	110	84
including: heavy and light ready-made clothes	14	18	20	34	63	46
knitwear	10	9	10	14	28	22
stockings and fabrics	-	5	6	8	12	10
Ships and ships' equipment	67	129	58	74	76	99
Equipment for the food and light industry	45	49	51	70	65	62
including: food industry	28	26	23	25	24	24
light industry	9	12	17	29	21	23
industrial refrigerator equipment	7	10	11	15	18	14
Cultural goods	27	29	36	49	59	57
including: household machinery	4	7	8	11	13	14
polygraphical products	11	11	12	16	18	16
Wooden furniture	5	9	7	16	47	57
Energy equipment	18	21	23	27	31	32
including: power stations	4	6	6	9	12	12
marine diesel engines	3	10	11	11	11	12
Chemical products	12	16	22	27	29	30
including: plastics	6	9	13	15	16	16
synthetic resin	3	4	8	11	14	12
Equipment	11	17	21	28	28	24

Table 37 ctd.

Category of goods, product	1958	1960	1961	1962	1963	1964
Forging press equipment	24	23	25	27	28	30
including: presses	16	14	16	16	15	14
mechanical presses	14	12	13	13	10	11
Metal cutting machines	16	18	17	25	28	29
Rolling mill equipment	19	13	14	23	27	33
Lifting devices	18	20	19	24	27	24
including: cranes and spare parts	16	18	15	22	25	21
Electrotechnical equipment	11	10	10	19	24	24
Cables	19	19	21	18	23	21
Equipment for the chemical industry	16	17	16	20	21	19
Cotton, wool and other materials	9	10	12	16	20	19
Calculating machines (without electronic computers)	7	8	12	13	19	18
Tractors, agricultural machinery	7	0	6	11	19	33
Dredgers and road construction equipment	2	3	2	6	19	24
including: dredgers	2	2	2	6	18	24
Fancy goods	10	8	10	13	17	16
Cinema and photographic material	12	15	18	18	15	13
including: cinema films	9	11	13	13	11	10
Equipment for the building material industry	47	55	38	14	13	32
Caoutchouc, rubber and asbestos products	14	13	14	11	12	9
including: synthetic caoutchouc	13	12	13	10	11	8
Industrial fittings	4	5	8	8	11	9
Equipment for the polygraphical industry	6	8	9	10	10	10
Fertilizers and insecticides	7	3	3	6	10	13
Sum of single items	531	637	593	732	900	923
remaining items	203	199	195	234	273	272

Table 37 ctd.

Category of goods, product	1958	1960	1961	1962	1963	1964
Total exports	734	836	788	966	1173	1195
including the most important item: machinery and equipment	472	520	444	549	642	688

- 1) All those individual and collective items have been included in the table whose value for 1963 exceeded 10 million rubles. The categories of goods and individual products are grouped in accordance with decreasing import and export figures for 1963.
- 2) The absolute export and import figures are based on current world market prices fob frontier of the delivery country in rubles. According to the Statistical Yearbook of the "DDR" 1966, International Surveys page 86. 100 rubles = DM(East) 247 or 100 rubles = \$ 112.

Sources : for 1958: Vnesnjaja trgovlja Sojuza SSR za 1955-1959 gody. Statisticeskij sbornik. Moskva 1961; for 1960 and 1961: Vnesnjaja trgovlja Sojuza SSR za 1961 god. Statisticeskij obzor Moskva 1962; for 1962 and 1963: Vnesnjaja trgovlja Sojuza SSR zu 1963 god. Statisticeskij obzor. Moskva 1964; for 1964: Vnesnjaja trgovlja Sjuza SSR za 1964 god. Statisticeskij obzor. Moskva 1965.

Table 38 : Composition of Soviet-zonal Imports
 from the Soviet Union by Categories
 of goods and selected products 1)
 (based on Soviet export statistics)
 (in million rubles 2))

Category of goods, product	1958	1960	1961	1962	1963	1964
Rolled stock of iron	108	166	188	193	190	227
including: sheets	-	-	-	78	88	102
bars	-	-	-	32	27	31
slabs	-	-	-	25	20	20
Grain (without groats)	111	119	111	139	101	74
including: wheat	86	98	79	85	71	44
rye	11	14	15	26	15	6
maize	5	2	5	20	10	12
Textile raw materials and semi-finished goods	70	89	100	103	99	96
including: cotton fibre	54	61	58	66	54	56
wool	12	17	35	27	33	30
Hard coal	60	70	73	82	77	81
Machinery and equipment	25	34	51	70	72	88
including: complete installation	0	6	7	9	10	13
NF metals and alloys	38	51	58	59	69	77
including: aluminium	12	16	22	20	26	31
copper	8	15	14	18	19	23
Meat and dairy products, eggs	26	39	49	74	64	30
including: cow butter	13	20	30	41	33	12
frozen meat	-	17	17	30	29	16
Cellulose, wood and paper products	330	36	42	48	56	65
including: sawn timber	20	27	32	35	41	45
Crude oil	20	32	36	43	53	68
Crude iron	33	40	34	37	40	47

Table 38 ctd.

Category of goods, product	1958	1960	1961	1962	1963	1964
Coke from hard coal	22	24	33	33	36	36
Ore and ore concentrates	22	26	28	31	30	33
including: iron ore	16	18	19	23	22	24
Vegetable oils	13	18	23	20	21	18
Petroleum products	-	13	16	15	19	15
Pipes and tubes	11	16	22	27	19	21
Oilseeds	3	15	16	11	15	15
Natural caoutchouc	6	11	14	13	11	11
Chemical products	7	8	10	11	11	13
Apatite concentrate	6	7	9	10	10	12
Sum of individual items	611	814	913	1019	993	1027
Remaining items	109	133	175	216	190	220
Total imports	720	947	1088	1235	1183	1247

- 1) All those individual and collective items have been included in the table whose value for 1963 exceeded 10 million rubles. The categories of goods and individual products are grouped in accordance with decreasing import and export figures for 1963.
- 2) The absolute export and import figures are based on current world market prices fob frontier of the delivery country in rubles. According to the Statistical Yearbook of the "DDR". International Surveys page 86. 100 rubles = DM(East) 247 or 100 rubles = \$ 112.

Sources : For 1958: Vnesnjaja trgovl'ja Sojuza SSR za 1955-1959 gody. Statisticeskij sbornik. Moskva 1961; for 1960 and 1961: Vnesnjaja trgovl'ja Sojuza SSR za 1961 god. Statisticeskij obzor. Moskva 1962; for 1962 and 1963: Vnesnjaja trgovl'ja Sojuza SSR za 1963 god. Statisticeskij obzor. Moskva 1964; for 1964: Vnesnjaja trgovl'ja Sojuza SSR za 1964 god. Statisticeskij obzor. Moskva 1965.

Table 39 : Composition of Soviet-zonal Foreign Trade
with various Countries of the Free World
and NATO

<u>France</u>	Soviet-zonal exports :	machinery and equipment, precision and optical as well as electro-technical products, chemical products
	imports :	machinery, equipment, iron and steel products
<u>Italy</u>	Soviet-zonal exports :	crude iron, machinery, precision and optical products, chemical products
	imports :	rolling-mill products, special machinery, textile products, fruit, petroleum products, synthetic fibre
<u>Norway</u>	Soviet-zonal exports :	motor vehicles, chemical products, textile products, sugar
	imports :	fish, fish products, rolling-mill products, cellulose, paper
<u>Greece</u>	Soviet-zonal exports :	refrigerator wagons, machinery, devices
	imports :	agricultural products, (tobacco, fruit, citrus fruits)
<u>Turkey</u>	Soviet-zonal exports :	machinery, equipment, precision and optical products, chemical products.
	imports :	tobacco and other agricultural products

Table 40 : Composition of Soviet-zonal Foreign Trade
with the five most important Western
Trade Partners

<u>Denmark</u>	Soviet-zonal exports :	potash, lignite briquettes, machinery and apparatus, iron and rolling mill products, chemical products, fertilizers, watercraft and motor vehicles, textiles, cultural goods
	imports :	agricultural products, fish, tinned fish, machinery and equipment
<u>United Kingdom</u>	Soviet-zonal exports :	machinery equipment, instruments, chemical products, fertilizers, cultural goods
	imports :	NF metals, steel products, machinery and equipment, chemical products
<u>Netherlands</u>	Soviet-zonal exports :	potash products, electrical and precision products, chemical products, cultural goods
	imports :	agricultural products
<u>Austria</u>	Soviet-zonal exports :	mining products, (lignite briquettes, potash), machinery, chemical products, light-industry products, cultural goods
	imports :	metallurgical products, machinery, transformers, equipment, timber, plywood, light-industry products
<u>Sweden</u>	Soviet-zonal exports :	machinery and apparatus, electro-technical and precision products, chemical products, textiles, cultural goods
	imports :	iron and steel products, pulp, paper, agricultural products, (meat products), tinned fish

Table 41 : Composition of Soviet-zonal Foreign Trade
 with the Developing Countries Egypt and India

<u>Egypt</u>	Soviet-zonal exports :	machinery equipment, precision and optical as well as electro-technical products, chemical products, fertilizers, pharmaceuticals, cultural goods
	imports :	cotton, cotton fibres, agricultural products (onions, rice, tropical fruit, vegetables)
<u>India</u>	Soviet-zonal exports :	machinery equipment, precision and optical as well as electro-technical products, chemical products, fertilizers, films
	imports :	iron ore, mica, protein fodder, cotton fabrics, jute products, spices, tea, nuts, tinned fruit, semi-finished and finished leather goods

Table 42 : Composition of Soviet-zonal Foreign Trade
 with Cuba

<u>Cuba</u>	Soviet-zonal exports :	machinery equipment, electro-technical, precision and optical products, vehicles, chemical products, industrial consumer goods
	imports :	agricultural products (sugar, tobacco, coffee), tinned fruit, rum, skins, mining products (ore)

Table 43 : Soviet-zonal Trade Agreements with
 NATO Countries

C o u n t r y	Trading partner	
	Soviet Zone	NATO country
1. Belgium-Luxembourg	Chamber of Foreign Trade of the "DDR" (ChFT)	Office Economique Belge (ORE)
2. Denmark	ChFT	Danish economic organisation
3. France	ChFT	Services Commerciaux Français en Allemagne
4. Greece	"Deutsche Notenbank" Berlin	Bank of Greece, Athens
5. Great Britain	ChFT	Confederation of British Industry (CBI)
6. Iceland	ChFT	Iceland Barter Association (IBA)
7. Italy	ChFT	National Institute of Foreign Trade (ICE)
8. Canada	-	-
9. Luxembourg (see item 1, Belgium-Luxembourg)		
10. Netherlands	ChFT	Stichting Nederlandse Kamer von Koophandel voor Duitsland
11. Norway	ChFT	Fa Norsk Kompensasjons-selskap A/S Norway
12. Portugal	"Deutsche Notenbank"	Bank of Portugal
13. Turkey	ChFT	Union of Chambers of Commerce, Chambers of Industry and commercial exchanges
14. USA	-	-

Table 44 : Intra-German Trade 1958 to 1966
(in million accounting units¹⁾)

	1958	1959	1960	1961	1962	1963	1964	1965	1966
A. Commodities									
I. Deliveries by the Federal Republic of Germany									
Iron, steel, NF metals	212.5	288.7	253.0	306.8	321.0	278.7	236.2	267.1	318.4
Mining products	67.6	109.5	40.9	20.3	39.3	70.3	78.5	27.8	29.0
Products of the metal working industry	187.1	227.7	258.0	208.1	137.6	125.0	219.0	192.0	320.4
Chemical products	83.8	99.8	124.7	105.3	63.6	95.2	205.9	282.2	332.8
Textiles	25.7	43.8	34.0	25.9	27.1	28.4	37.8	45.5	71.5
Agricultural and forestry products	144.9	108.6	111.7	82.3	165.1	142.2	188.0	193.7	321.5
Miscellaneous 2)	87.3	103.1	104.9	64.8	86.2	94.3	103.8	97.5	133.6
Total	808.9	981.2	927.1	813.4	839.9	834.1	1069.2	1105.8	1527.2
II. Deliveries by the Soviet Zone and East Berlin									
Mining products	240.0	207.5	216.5	207.2	234.5	257.0	247.5	208.0	162.3
Mineral oil products	150.7	195.7	182.3	189.6	197.9	211.6	139.6 ³⁾	73.2	75.4
Products of metal working industry	90.7	95.3	114.8	106.7	91.1	96.0	134.6	174.1	170.2
Chemical products	60.3	59.3	65.2	60.6	45.2	53.8	72.4	90.7	79.7
Textiles	90.3	90.3	128.0	113.8	93.8	122.7	168.1	205.0	223.5
Agricultural and forestry products	111.5	147.0	146.9	112.0	117.8	141.8	178.1	287.6	361.9
Miscellaneous 2)	119.7	122.3	134.8	110.7	102.4	121.9	143.5	175.1	201.2
Total	863.2	917.4	988.5	900.6	882.7	1004.8	1083.5	1213.7	1274.2

Table 44 ctd.

	1958	1959	1960	1961	1962	1963	1964	1965	1966
B. Goods and Services									
Federal Republic of Germany									
Goods	808.9	981.2	927.1	813.4	839.9	834.1	1069.4	1105.8	1527.2
Services	63.9	81.4	103.2	97.6	61.7	73.1	123.6	119.1	153.6
Total	872.8	1062.6	1030.3	911.0	901.6	907.2	1192.8	1224.9	1680.8
Soviet Zone and East Berlin									
Goods	863.2	917.4	988.5	900.6	882.7	1004.8	1083.5	1213.7	1274.2
Services	16.6	18.0	18.8	16.7	16.1	23.9	28.4	35.3	49.5
Total	879.8	935.4	1007.3	917.3	898.8	1028.7	1111.9	1249.0	1323.7
Total volume of goods	1672.1	1898.6	1915.6	1714.0	1722.6	1838.9	2152.9	2319.5	2801.4
Total volume of services	80.5	99.4	122.0	114.3	77.8	97.0	152.0	154.4	203.1
Grand total of goods and services	1752.6	1998.0	2037.6	1828.3	1800.4	1935.9	2304.9	2473.9	3004.5

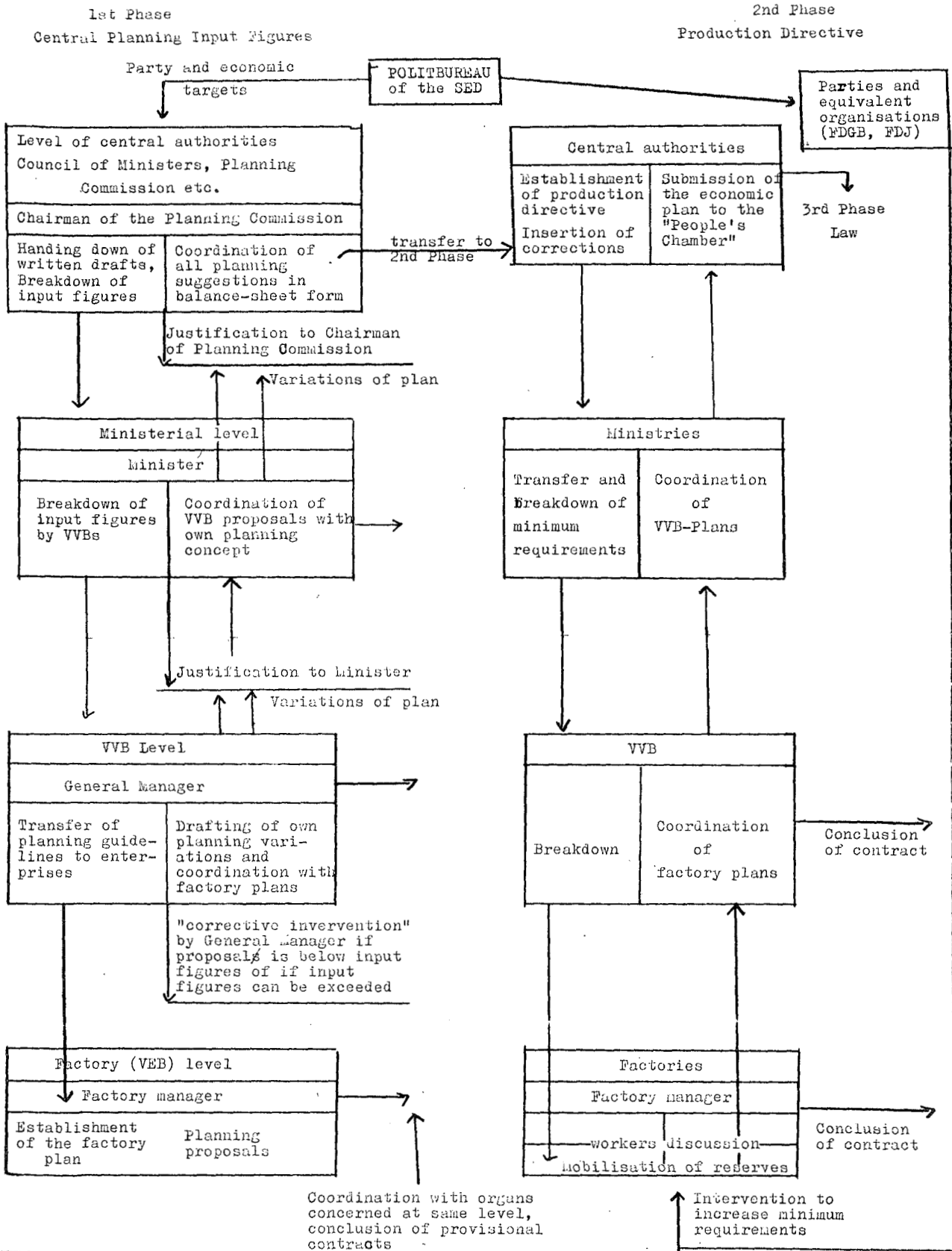
1) 1 accounting unit = 1 DM West

2) Stones and earthenware, cellulose, paper, printed products, wood products, glass, ceramics, rubber products leather, leather goods, footwear, tobacco etc., small consignments and commission processing

3) This amount includes adjustments for fuel amounting to 75.1 million accounting units

Source : Federal Ministry of Economics

Table 45: Out-line of the New Planning System in the Soviet Zone
Example : Planning System for Industry



VVB = Association of people owned enterprises
VEB = Peoples' owned factory
FDGB = "Free German Trade Union"
FDJ = "Free German Youth"